

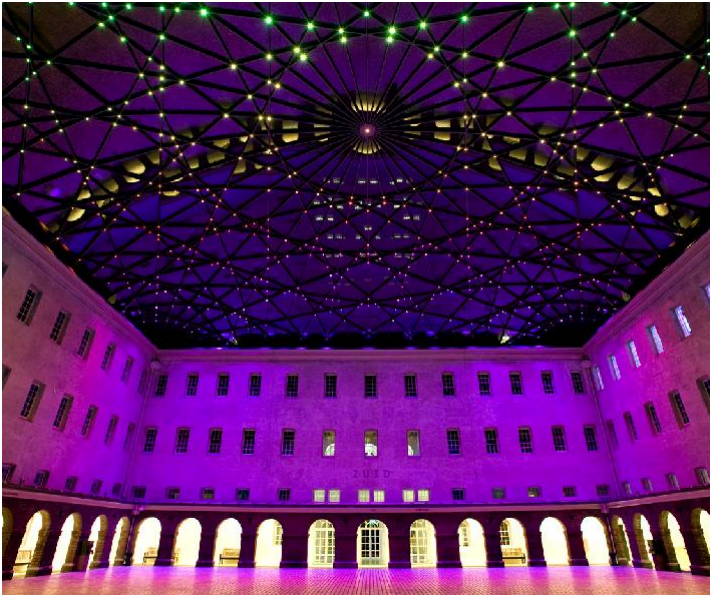
het scheepvaart national maritime museum



**water connects
worlds**

**your event at an
impressive location**

The National Maritime Museum has beautiful spaces, optimal service and is uniquely located at the water in the centre of Amsterdam. The monumental building dates from 1656 and is an outstanding location for all sorts of (business) events. It was designed as a warehouse for the Admiralty of Amsterdam, and over 350 years later it is a highly wanted location for big and small groups. Various multifunctional rooms offer unprecedented opportunities for inspiring meetings in an elegant décor.



unique venue

From meeting to wedding ceremony, from reception and dinner to party. Our team can tend to every aspect of your event. Let your guests arrive by boat, treat them to a museum visit or enjoy a drink on our floating terrace. We work with selected partners to enrich your event, for instance in audio-visual solutions and entertainment.



the Open Courtyard

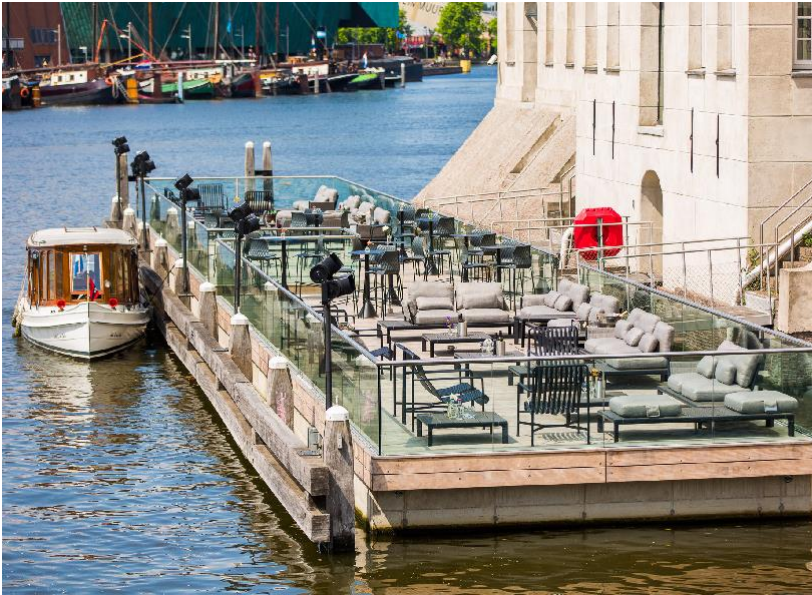
The Open Courtyard is the central hall of our monumental building, the Arsenal. Thanks to the spectacular glass roof, the courtyard can be used all year round for events, receptions and dinners. The glass roof gives the courtyard an intimate ambiance. A specially developed floor ensures optimal acoustics for music and presentations. The Open Courtyard can accommodate dinners up to 700 guests and receptions, walking dinners or party's up to 1000 guests. The Open Courtyard is available after museum closing time at 5:00 PM and depending on the size of the group we can provide a starting time for your event. Our exclusive partner Bourgonje will take care of all technical facilities at the Open Courtyard. We will be happy to introduce you. The rental fee for the exclusive use of the museum is €14.500,00 excluding VAT.

the Chambers

The Chambers, with views on the water are ideally suited for business meetings or festive events. The state-of-the-art facilities and their historical environment turn any workshop, meeting, wedding or party into an unforgettable experience. The rooms are connected via doors and windows and are available during the day as well as the evening. All three chambers are equipped with a fixed projector, projection screen and WIFI.



Treat your guests to a visit through the museum as a well-deserved break during the day. Our enthusiastic guides are happy to take them on a tour. A team activity in game form belongs amongst the possibilities as well.



the Deck

The *Deck*, two floating terraces on the water at the West side of the museum, is accessible via the Chamber of De Ruyter. The terraces together measure 200 square meters and each terrace can hold a maximum of 75 guests. The Deck is decorated with fixed furniture: parasols, lounge furniture and high tables. The rental fee for the three Chambers combined with one floating terrace is €4.450,- excluding VAT per day.

Admiralty boardroom

The Admiralty, who supervised the huge warehouse and adjacent shipyard, once dined in this 'gentlemen's chamber'. After the museum's renovation, the room was transformed into an intimate lounge with a unique character, which now provides 20 seats for a meeting or dinner. The furniture is contemporary, but retains all the maritime allure of days gone by. The use of the Admiralty Boardroom during opening hours of the museum can only be requested within 6 weeks prior to the event date. For a dinner in the evening the boardroom can be reserved based on availability. The rental fee for half-day sessions is €1000,00 and €1500,00 excluding VAT for a full day.

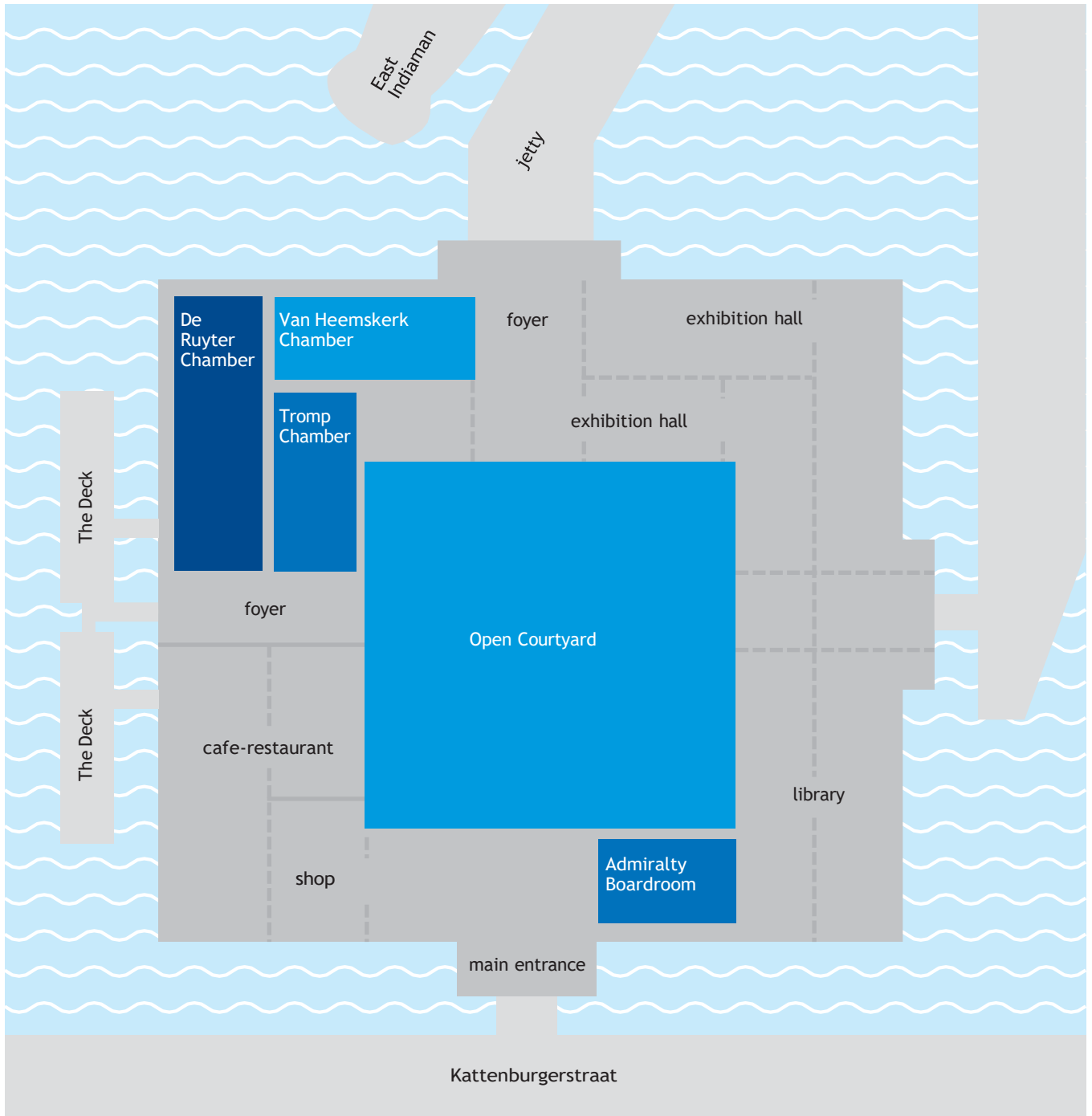
catering

The National Maritime Museum is delighted to discuss catering possibilities for your event. We have our own in-house kitchen department. Everything comes fresh out of our own kitchen, from the biscuit at your coffee to the smoked fish for lunch. The Chef works according to the Dutch Cuisine movement: beautiful regional and seasonal products inspired by our own Dutch kitchen and culture. It is also possible to work with one of our preferred caterers. A 15% commission over the final invoice of a non-preferred caterer applies.

at your service

We would be happy to help you plan your event. From putting together the programme and catering to AV-solutions and activity. If desired, we can take care of every aspect of your event. Please ask us about the possibilities.

Het Scheepvaartmuseum
Kattenburgerplein 1
1018 KK Amsterdam
T +31 (0)20 523 22 46
events@hetscheepvaartmuseum.nl
www.hetscheepvaartmuseum.nl



capacity overview

	theatre	dinner	reception	m ²	l x h x w (m)
Admiralty Boardroom	-	20	-	58,5	9 x 5 x 6,5
De Ruyter Chamber	150	120	175	147,4	22 x 5 x 6,7
Tromp Chamber	80	80	125	110,5	16,5 x 5 x 6,7
Van Heemskerck Chamber	80	80	125	110,5	16,5 x 5 x 6,7
Open Courtyard	750	700	1000	900	30 x 15 x 30
The Deck	-	-	150	200	40 x 5 (l x w)